

) david
trubridge



Kōura



Kōura



Inspired by woven baskets and also from the curled form of the New Zealand native fresh water shrimp, kōura, which is its Māori name. Kōura pendant light was inspired by woven baskets and also from the curled form of the New Zealand native fresh water shrimp, kōura, which is its Māori name. Kōura is an early design, undergoing many design changes to tweak its final form. Kōura comes in 6 sizes. The plywood finish can be all natural, caramel or painted on one side thus creating a stock selection of 11 options.



Features

Shipped Kitset

Seed System kitset lightshades are on average 1/30th of the volume of the assembled light. This aims to help minimize the effects of shipping and to reduce the design's environmental footprint.

Compliance

CE

AS/NZS

(Declarations of conformity available on request).

Care Instructions

All wooden and/or polycarbonate lights are intended for use in dry interior conditions only and can be cleaned with a soft cloth dampened slightly in warm water when the light is switched off. Do not use detergents.

Light sizes

David Trubridge kitset lightshades come in various sizes, making it easy to find the right size to any interior space whether it's small or large.

EPD Certified

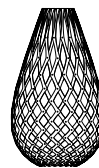
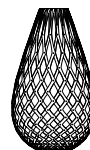
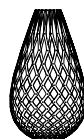
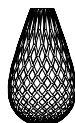
An EPD is a standardised and verified way of quantifying the environmental impacts of a product, based on a consistent set of rules that have been developed through a stakeholder consultation process.

Warranty

This light is warranted for three years from date of purchase for failure of parts.



Technical Data



500mm/20"

750mm/29"

1000mm/39"

1600mm/63"

2000mm/79"

2400mm/94"

Width: 300mm / 12"	Width: 420mm / 17"	Width: 550mm / 22"	Width: 950mm / 37"	Width: 1100mm / 43"	Width: 1400mm / 55"
Height: 500mm / 20"	Height: 750mm / 30"	Height: 970mm / 38"	Height: 1600mm / 63"	Height: 2000mm / 79"	Height: 2400mm / 94"
Weight: 0.45kg / 0.99lb	Weight: 0.75kg / 1.65lb	Weight: 1.8kg / 3.96lb	Weight: 7kg / 15.43lb	Weight: 10kg / 22.04lb	Weight: 12.5kg / 27.55lb
2m / 6.5ft	2m / 6.5ft	2m / 6.5ft	5m / 16.4ft	5m / 16.4ft	5m / 16.4ft
Bamboo plywood (Sourced from FSC accredited factory)	Bamboo plywood (Sourced from FSC accredited factory)	Bamboo plywood (Sourced from FSC accredited factory)	Bamboo plywood (Sourced from FSC accredited factory)	Bamboo plywood (Sourced from FSC accredited factory)	Bamboo plywood (Sourced from FSC accredited factory)
Nylon	Nylon	Nylon	Nylon	Nylon	Nylon
Hangs on cord	Hangs on cord	Hangs on cord	3 x Suspension Wires	3 x Suspension Wires	3 x Suspension Wires
570mm x 255mm x 50mm 22" x 10" x 2" 0.007m³ / 0.257ft³ 0.7kg / 1.54lb	880mm x 200mm x 70mm 35" x 8" x 3" 0.012m³ / 0.435ft³ 2kg / 4.41lb	740mm x 250mm x 90mm 29" x 10" x 3" 0.017m³ / 0.600ft³ 3kg / 6.61lb	1260mm x 370mm x 200mm 50" x 17" x 8" 0.093m³ / 3.284ft³ 9.5kg / 20.94lb	1375mmx 450mm x 160mm 54" x 18" x 6" 0.100m³ / 3.531ft³ 20kg / 44.09lb	1780mm x 530mm x 160mm 70" x 21" x 6" 0.151m³ / 5.332ft³ 30kg / 66.13lb

Dimensions

Cordset*

Material

Fasteners

Suspension

Packaging

*Black comes with black cordset and fasteners. All others come with white cordset and clear fasteners. Custom lengths available on request.

You will need

Fixings for cone gripper (fixing screws NOT SUPPLIED).

Note: Choose appropriate hardware to attach base plate (Fig.1) to ceiling substrate.

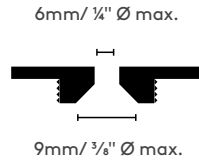


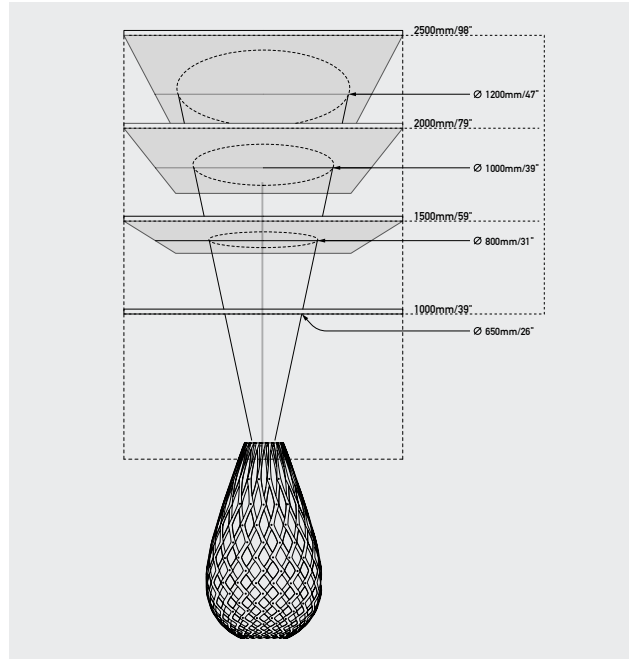
Fig 1. Base Plate

Installation

1600mm/63"

2000mm/79"

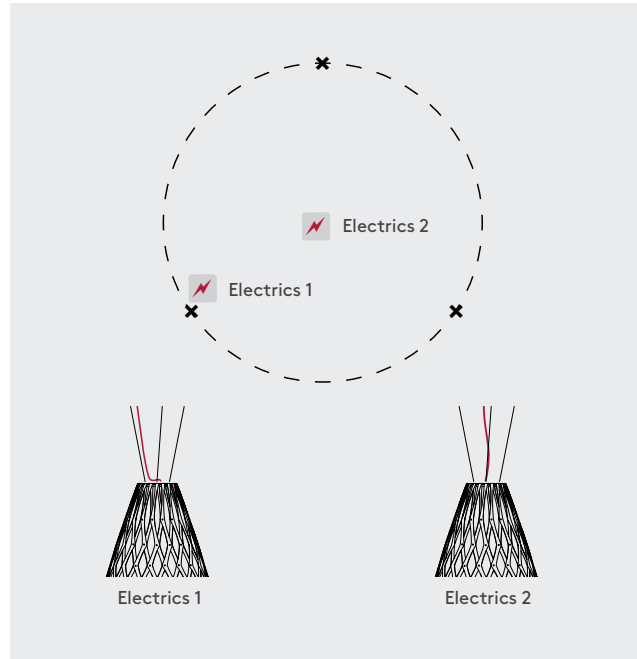
2400mm/94"



Step 1.

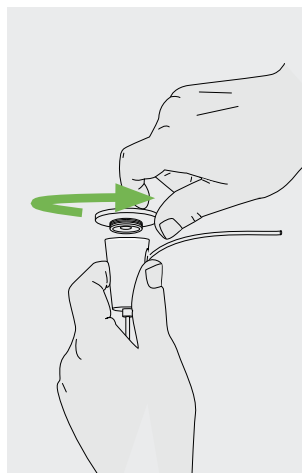
Decide upon hanging distance. Use the schematic diagram as a guide to pick a circle radius to be marked out on ceiling. This circle can be marked with a length of timber or string.

Options



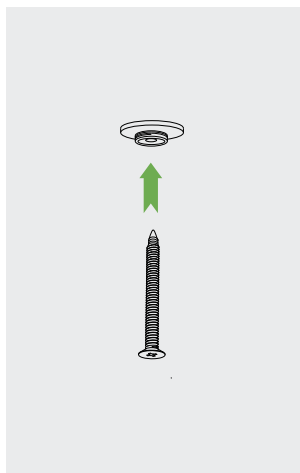
Step 2.

Mark 3 hanging points where your cone grippers will be located. You can either centrally locate the ceiling canopy or run the electric cord up one of the suspension wires.



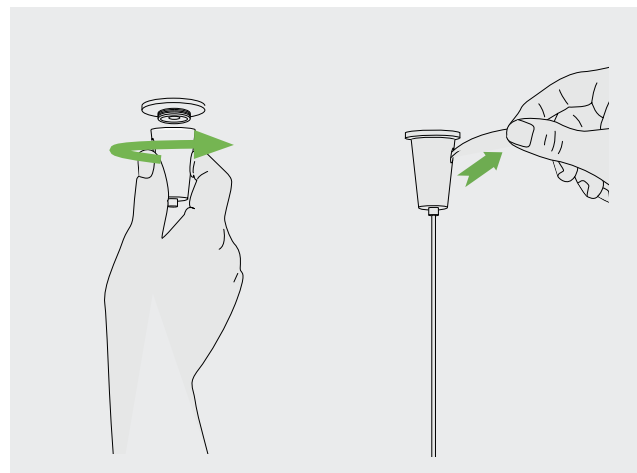
Step 1.

Unscrew baseplate.



Step 2.

Use appropriate fixing screw to mount base plate (Fig.1).

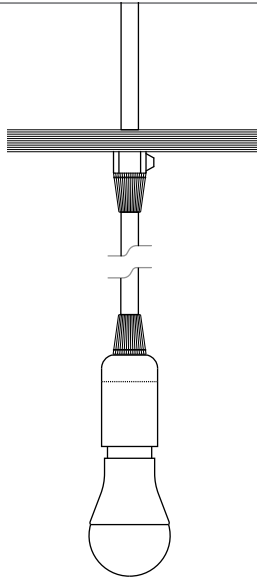


Step 3.

Remove cable from cone. Screw cone back onto baseplate. Re-insert cable and level light. Once desired position is set, trim excess cable.

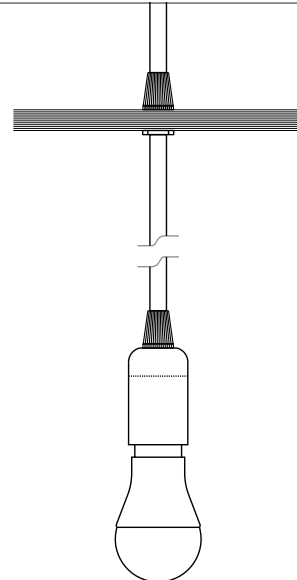
Diagrams

500mm/20"



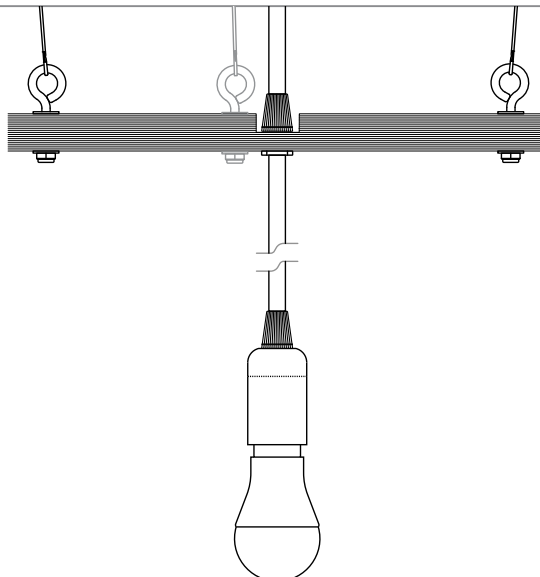
North America: E26, Max 60 Watts
120v AC 60hz
Rest of World: E14, Max 60 Watts
230-240v AC 50hz

750mm/29"
1000mm/39"



North America: E26, Max 60 Watts
120v AC 60hz
Rest of World: E27, Max 60 Watts
230-240v AC 50hz

1600mm/63"
2000mm/79"
2400mm/94"



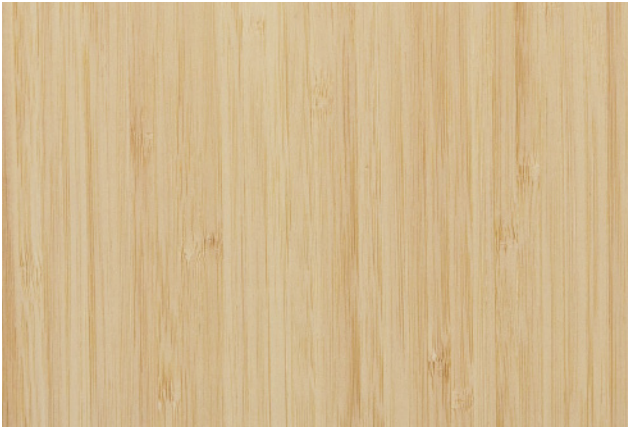
North America: E26, Max 60 Watts
120v AC 60hz
Rest of World: E27, Max 60 Watts
230-240v AC 50hz

David Trubridge PENDANT SERIES

This luminaire is compatible with bulbs of the energy classes:

874/2012

Finish Choices



Natural

All bamboo (our primary material) is secondary product, from renewable forests in China grown as a food source. We have visited these plantations and are satisfied with the quality of their systems.



Caramel

Caramel bamboo starts out as natural and is carbonised using steam to caramelise the natural sugars which darken the bamboo. This process creates a different look without using chemicals.



Painted Lights

We use an acrylic low VOC (volatile organic compound) paint that is made in New Zealand. Colour swatches are available in all retailers. See the Resene website for more info.
www.resene.co.nz



Natural



Caramel



Aqua



Lime



Red



Orange



Yellow



White 1 Side



White 2 Sides



Image Coming Soon

Black 1 Side (Outside)



Image Coming Soon

Black 1 Side (Inside)



Black 2 Sides

Contact

New Zealand
Showroom/Head office



spencer
interiors

spencer interiors
vancouver bc canada
telephone: 604 736.1378
www.spencerinteriors.ca

Address

**Corner Station Road &
Groome Place, Whakatu,
Hastings, Hawkes Bay,
New Zealand**